

Apartment Block – Type A

5 X 1 Bedroom Apartments

1 X 2 Bedroom Apartments



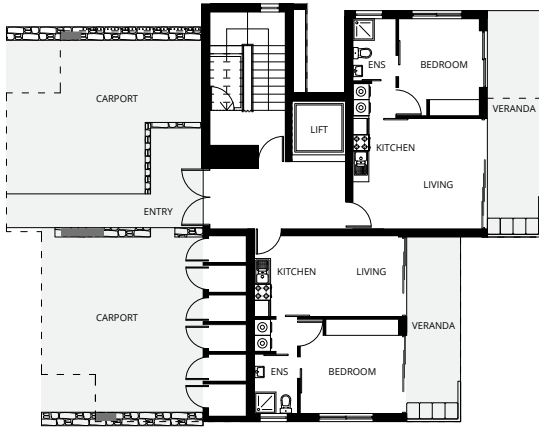
Please note that these floor plans were produced prior to completion of construction. The information contained herein is believed to be correct but is not guaranteed. Dimensions, areas and scale of floor plans are approximate. Changes may be made during construction. Design is subject to change in line with the provisions of the contract for sale.

For further enquiries call +357 2239 9300 or visit citrineestates.com

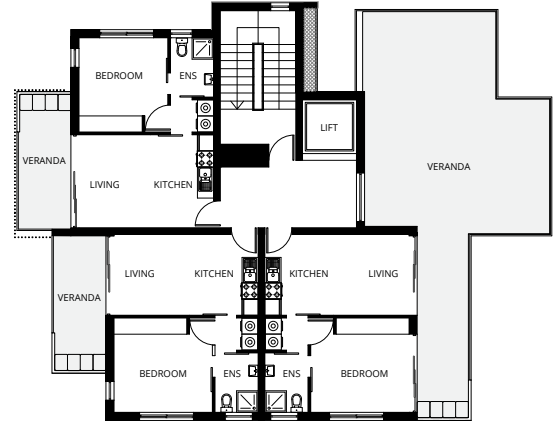
CITRINE  ESTATES

Apartment Block – Type A

5 X 1 Bedroom Apartments
1 X 2 Bedroom Apartments



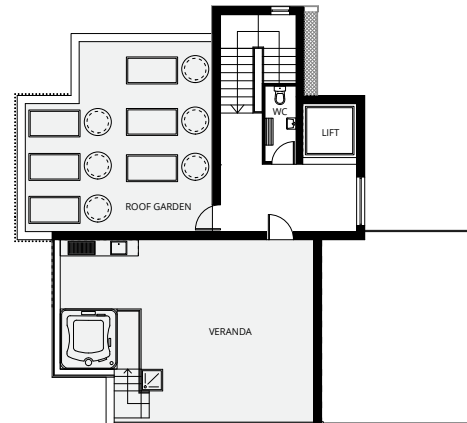
GROUND FLOOR



FIRST FLOOR



SECOND FLOOR



ROOFTOP

Area

Total building covered area **660 m²**

Total uncovered veranda **98 m²**

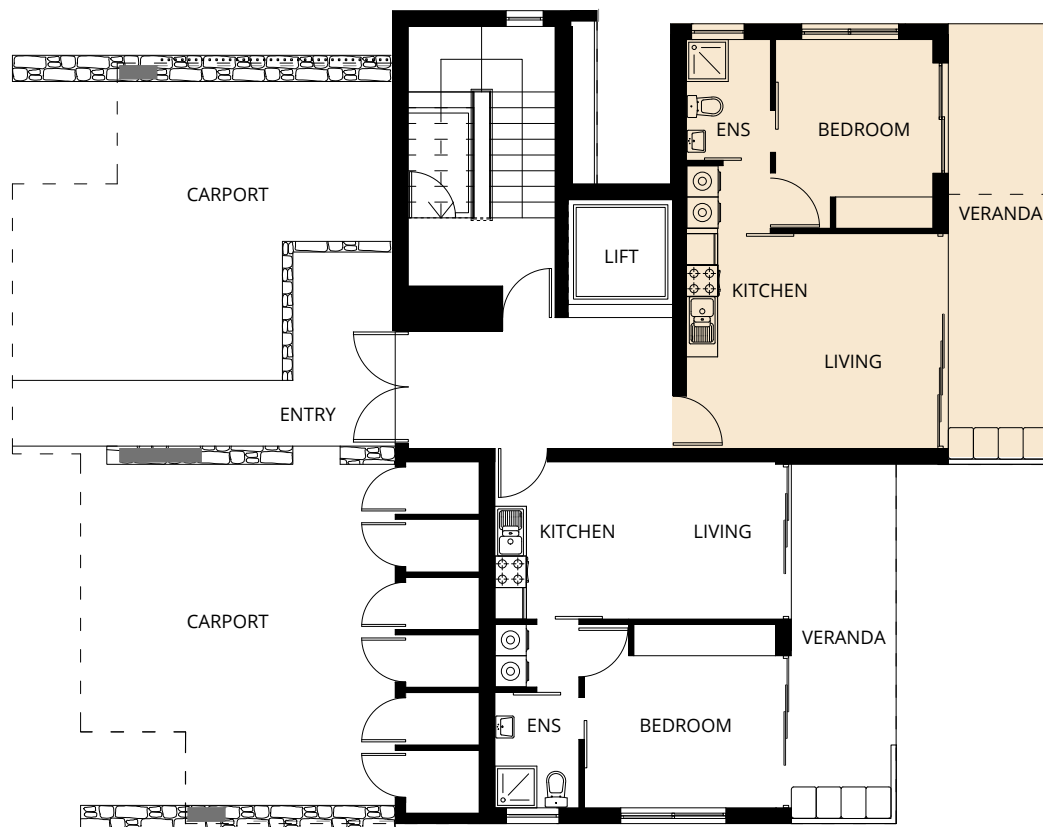
Total common areas **156 m²**

Please note that these floor plans were produced prior to completion of construction. The information contained herein is believed to be correct but is not guaranteed. Dimensions, areas and scale of floor plans are approximate. Changes may be made during construction. Design is subject to change in line with the provisions of the contract for sale.

For further enquiries call +357 2239 9300 or visit citrineestates.com

Type A – Apartments

1 Bedroom Apartment (53 m²)



GROUND FLOOR

Area

Total covered area **53 m²**

Uncovered veranda **7 m²**

Storage **2 m²**

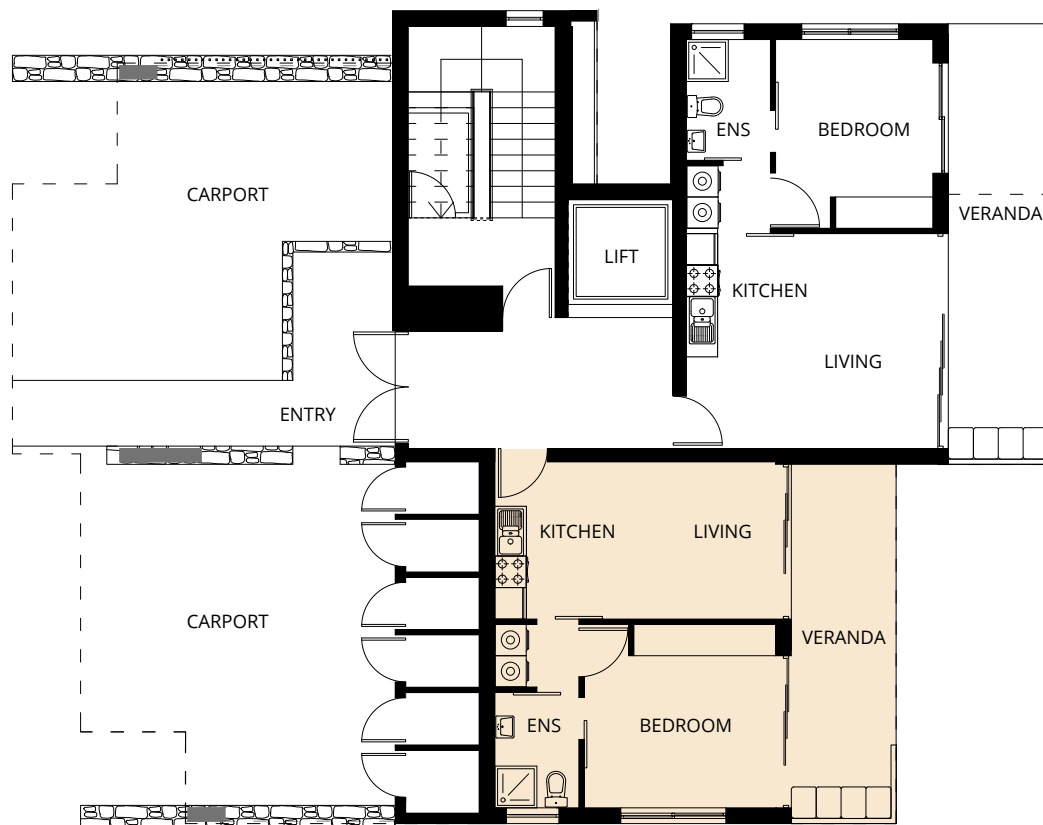
Parking **16 m²**

Please note that these floor plans were produced prior to completion of construction. The information contained herein is believed to be correct but is not guaranteed. Dimensions, areas and scale of floor plans are approximate. Changes may be made during construction. Design is subject to change in line with the provisions of the contract for sale.

For further enquiries call +357 2239 9300 or visit citrineestates.com

Type A – Apartments

1 Bedroom Apartment (56 m²)



GROUND FLOOR

Area

Total covered area **56 m²**

Uncovered veranda **0 m²**

Storage **2 m²**

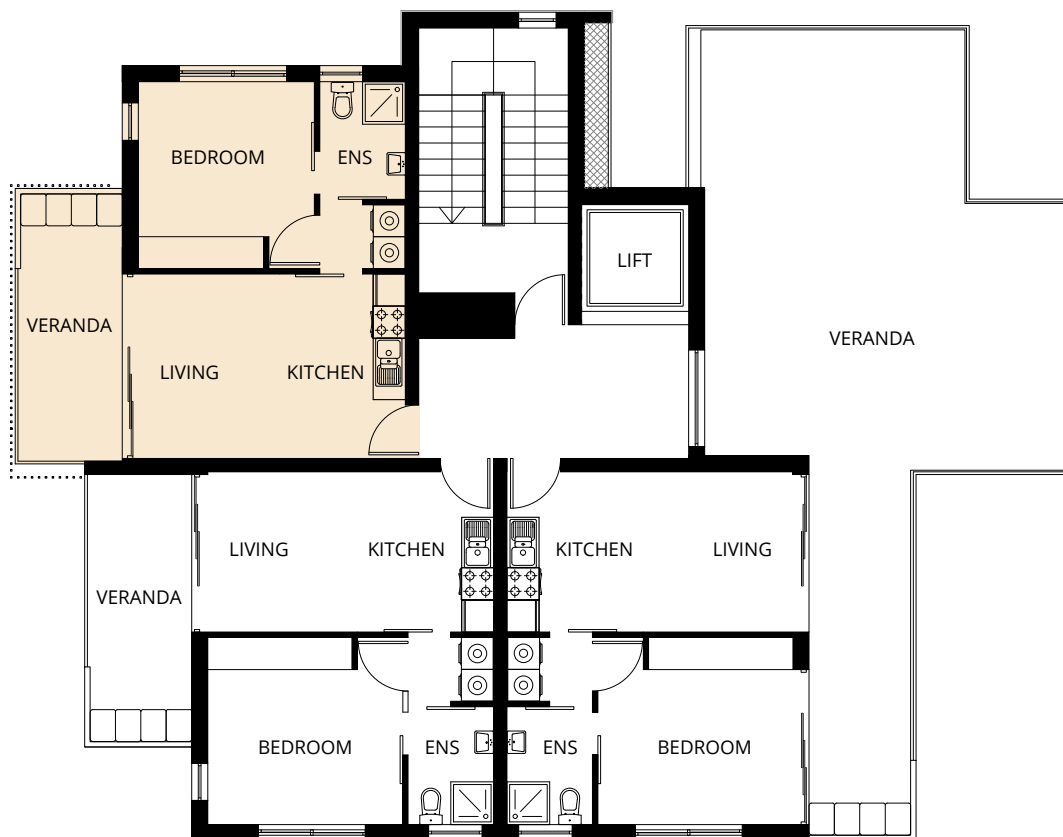
Parking **14 m²**

Please note that these floor plans were produced prior to completion of construction. The information contained herein is believed to be correct but is not guaranteed. Dimensions, areas and scale of floor plans are approximate. Changes may be made during construction. Design is subject to change in line with the provisions of the contract for sale.

For further enquiries call +357 2239 9300 or visit citrineestates.com

Type A – Apartments

1 Bedroom Apartment (50 m²)



FIRST FLOOR

Area

Total covered area **50 m²**

Uncovered veranda **0 m²**

Storage **2 m²**

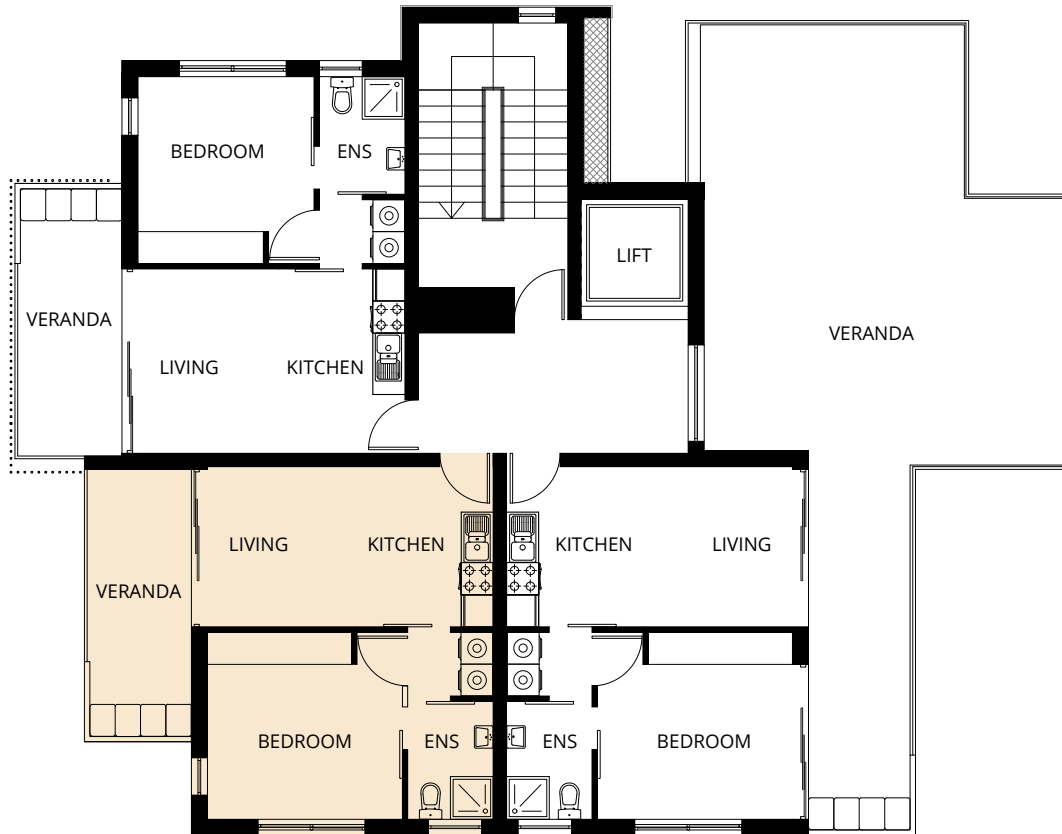
Parking **20 m²**

Please note that these floor plans were produced prior to completion of construction. The information contained herein is believed to be correct but is not guaranteed. Dimensions, areas and scale of floor plans are approximate. Changes may be made during construction. Design is subject to change in line with the provisions of the contract for sale.

For further enquiries call +357 2239 9300 or visit citrineestates.com

Type A – Apartments

1 Bedroom Apartment (51 m²)



FIRST FLOOR

Area

Total covered area **51 m²**

Uncovered veranda **0 m²**

Storage **2 m²**

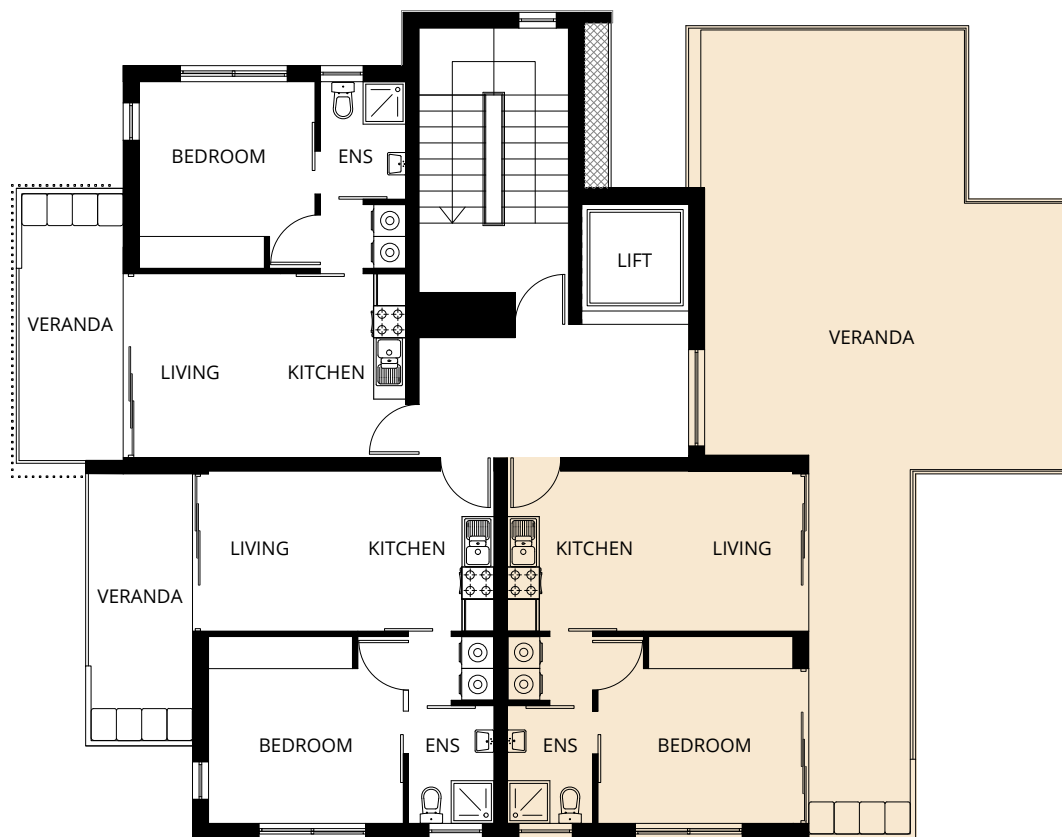
Parking **18 m²**

Please note that these floor plans were produced prior to completion of construction. The information contained herein is believed to be correct but is not guaranteed. Dimensions, areas and scale of floor plans are approximate. Changes may be made during construction. Design is subject to change in line with the provisions of the contract for sale.

For further enquiries call +357 2239 9300 or visit citrineestates.com

Type A – Apartments

1 Bedroom Apartment (55 m²)



FIRST FLOOR

Area

Total covered area **55 m²**

Uncovered veranda **52 m²**

Storage **2 m²**

Parking **19 m²**

Please note that these floor plans were produced prior to completion of construction. The information contained herein is believed to be correct but is not guaranteed. Dimensions, areas and scale of floor plans are approximate. Changes may be made during construction. Design is subject to change in line with the provisions of the contract for sale.

For further enquiries call +357 2239 9300 or visit citrineestates.com

Type A – Apartments

2 Bedroom Apartment (121 m²)



SECOND FLOOR

Area

Total covered area **121 m²**

Uncovered veranda **39 m²**

Storage **2 m²**

Parking **19 m²**

Please note that these floor plans were produced prior to completion of construction. The information contained herein is believed to be correct but is not guaranteed. Dimensions, areas and scale of floor plans are approximate. Changes may be made during construction. Design is subject to change in line with the provisions of the contract for sale.

For further enquiries call +357 2239 9300 or visit citrineestates.com

Apartment Block – Type A

Specifications

This is a three-story building that houses a total of five 1-bedroom apartments and one 2-bedroom apartment, distributed as follows:

Ground floor

- Two 1-bedroom apartments with open-plan living room/dining area/kitchen, bathroom, and veranda

First floor

- Three 1-bedroom apartments with open-plan living room/dining area/kitchen, bathroom, and veranda

Second floor

- One 2-bedroom apartment, each bedroom with ensuite bathroom, with open-plan living room/dining area/kitchen, guest WC, and roof garden area that includes lounge area, jacuzzi, barbecue area, and external shower

Additional facilities for each apartment

- Private storage room on the ground floor
- Designated covered car park

Common areas for all residents

- Main building entrance
- Roof terrace with lounge area, barbecue area, and jacuzzi
- Landscaped gardens with swimming pool

Special Features

- Modern design and quality construction
- Thermal insulation on external walls
- Elevator from ground floor to roof terrace
- Security entrance door for each apartment
- Smart house systems
- Double-glazed ultra lift and slide windows and veranda doors
- Split unit air-conditioning system with remote control for each area
- Branded European ceramic floor and wall tiles
- Built-in self-closing wardrobes with drawer units and internal lighting
- Branded European built-in kitchen units
- Branded European kitchen and household appliances
- Techno-granite vanity tops in bathrooms and WC
- Techno-granite kitchen countertop
- Top quality sanitary ware in all bathrooms
- Latest-technology indoor and outdoor energy efficient LED lighting

Please note that these floor plans were produced prior to completion of construction. The information contained herein is believed to be correct but is not guaranteed. Dimensions, areas and scale of floor plans are approximate. Changes may be made during construction. Design is subject to change in line with the provisions of the contract for sale.

For further enquiries call +357 2239 9300 or visit citrineestates.com