
Residences

3-Bedroom Residence

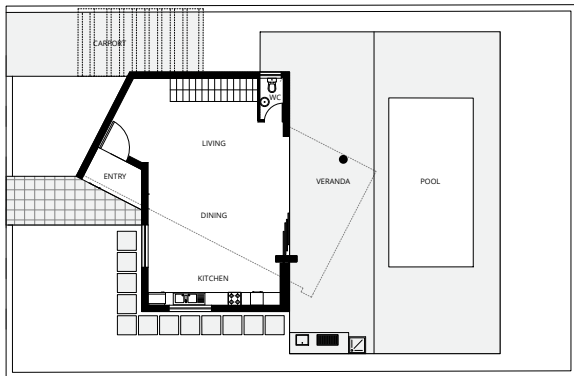


Please note that these floor plans were produced prior to completion of construction. The information contained herein is believed to be correct but is not guaranteed. Dimensions, areas and scale of floor plans are approximate. Changes may be made during construction. Design is subject to change in line with the provisions of the contract for sale.

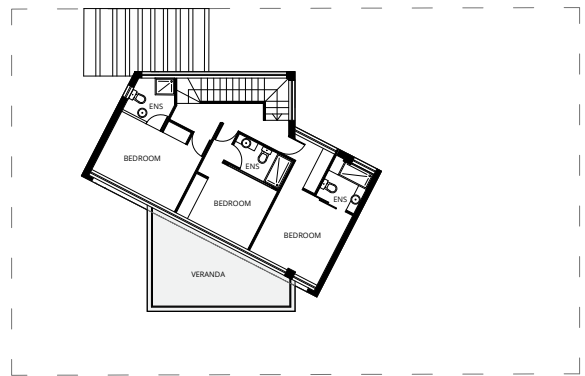
For further enquiries call +357 2239 9300 or visit citrineestates.com

Residences

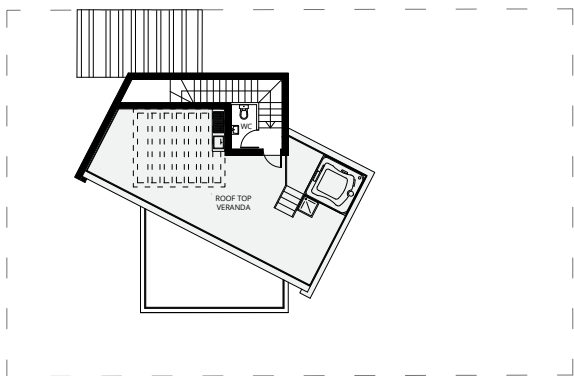
3-Bedroom Residence



GROUND FLOOR



FIRST FLOOR



ROOF TOP

Area

Total covered area **213 m²**

Uncovered veranda **64 m²**

Parking **17 m²**

Roof garden **67 m²**

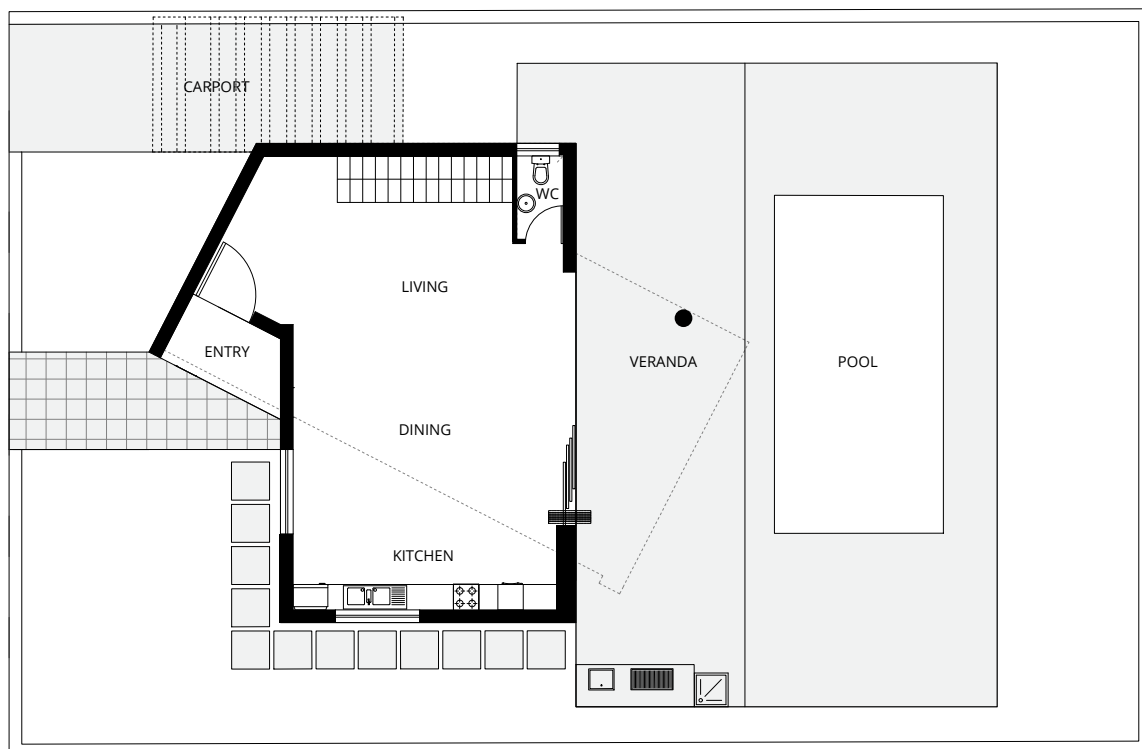
Plot size **466 m²-608 m²**

Please note that these floor plans were produced prior to completion of construction. The information contained herein is believed to be correct but is not guaranteed. Dimensions, areas and scale of floor plans are approximate. Changes may be made during construction. Design is subject to change in line with the provisions of the contract for sale.

For further enquiries call +357 2239 9300 or visit citrineestates.com

Residences

3-Bedroom Residence



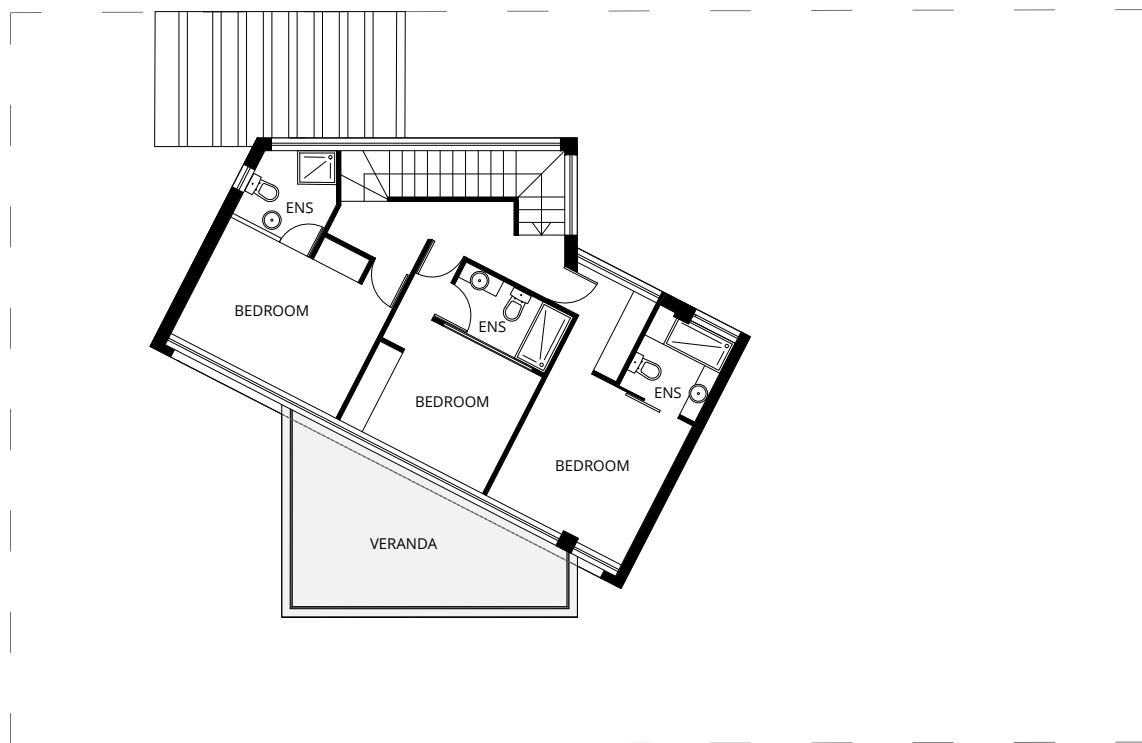
GROUND FLOOR

Please note that these floor plans were produced prior to completion of construction. The information contained herein is believed to be correct but is not guaranteed. Dimensions, areas and scale of floor plans are approximate. Changes may be made during construction. Design is subject to change in line with the provisions of the contract for sale.

For further enquiries call +357 2239 9300 or visit citrineestates.com

Residences

3-Bedroom Residence



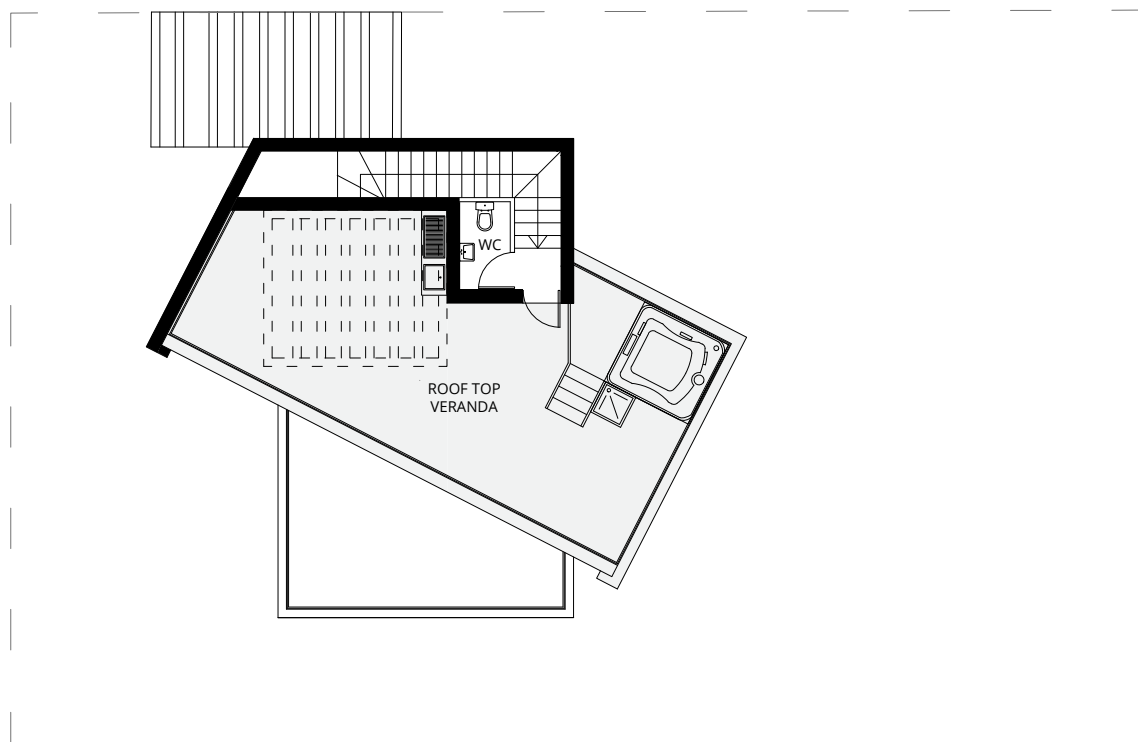
FIRST FLOOR

Please note that these floor plans were produced prior to completion of construction. The information contained herein is believed to be correct but is not guaranteed. Dimensions, areas and scale of floor plans are approximate. Changes may be made during construction. Design is subject to change in line with the provisions of the contract for sale.

For further enquiries call +357 2239 9300 or visit citrineestates.com

Residences

3-Bedroom Residence



ROOF TOP

Please note that these floor plans were produced prior to completion of construction. The information contained herein is believed to be correct but is not guaranteed. Dimensions, areas and scale of floor plans are approximate. Changes may be made during construction. Design is subject to change in line with the provisions of the contract for sale.

For further enquiries call +357 2239 9300 or visit citrineestates.com

Residences

3-Bedroom Residence

This property is a two-story, 3-bedroom residence with the following layout:

Ground floor

- Open-plan living room/dining area/kitchen
- Guest WC
- Partially covered terrace
- Private garden with barbecue area
- Large swimming pool with sunbathing deck and outdoor shower
- Private car park

Upper floor

- Three ensuite bedrooms
- Large veranda

Roof

- Large rooftop terrace with lounge area, jacuzzi, and barbecue area
- WC

Special Features

- Modern design and quality construction
- Thermal insulation on external walls
- Elevator from ground floor to roof terrace
- Security entrance door
- Smart house systems
- Double-glazed ultra lift and slide windows and veranda doors
- Split unit air-conditioning system with remote control for each area
- Branded European ceramic floor and wall tiles
- Built-in self-closing wardrobes with drawer units and internal lighting
- Branded European built-in kitchen units
- Branded European kitchen and household appliances
- Techno-granite vanity tops in bathrooms and WC
- Techno-granite kitchen countertop
- Top quality sanitary ware in all bathrooms
- Latest-technology indoor and outdoor energy efficient LED lighting

Please note that these floor plans were produced prior to completion of construction. The information contained herein is believed to be correct but is not guaranteed. Dimensions, areas and scale of floor plans are approximate. Changes may be made during construction. Design is subject to change in line with the provisions of the contract for sale.

For further enquiries call +357 2239 9300 or visit citrineestates.com